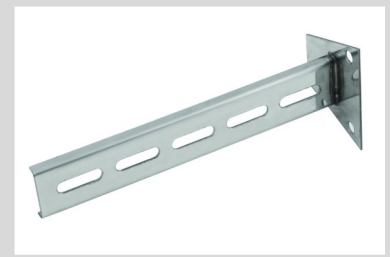


Our chimneys can be made functional, to work with Gas or Multi-Fuel burning stoves. Please bear in mind the following important considerations:

- Any flue fitted to a GRP (fibreglass) chimney, must be a Class 1 Twin-Walled system.
- Pots will be produced in Class 1 fire retardant material.
- Maximum outside pipe diameter is 200mm—Anything wider than this, will require the pot to be cut down to a wider/lower point

We will require the following parts for a chimney from our standard range:

- One length of twin-walled flue pipe—usually 900mm—1 mtr long
- One bracket / wall band—these can be two separate pieces or an all-in one part
- Extendable arms—up to 450mm if possible—again, this could be a part incorporated into the wall band



- Please allow 5 working days from our receipt of the parts, for fitting and dispatch of the finished chimneys.
- The flue pipe will protrude from the top of the pot by approx. 25-30mm for the addition of a terminal/cowl.
- We do not require the terminal/cowl to be delivered for fitting in-factory—this is best done once the chimney is on site and in-situ to avoid any damage whilst in transit.
- Please check with your local building control department to ensure that your chimney & flue will be compliant with flue regulations.

We recommend the following flue manufacturers & suppliers:

- Schidel - <https://www.schidel.com/uk/>
- Poujoulat - <https://www.poujoulat.co.uk/>
- Midtherm - <https://www.midtherm.co.uk/>
- Stoves Online - <https://www.stovesonline.co.uk/>
- Specflue - <https://www.specflue.com/>
- Flue Supplies - <https://www.fluesupplies.com/>

